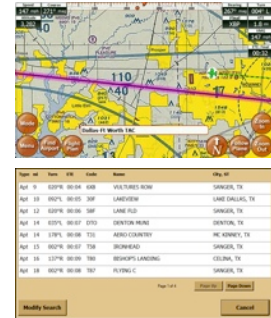




## Adventure Pilot Introduces New Features to the iFly 700™ with a Version 4 Software Update.

McKinney, TX / November 1, 2010 -- Adventure Pilot LLC, announces the release of Version 4 Software Update which provides expanded capabilities on the iFly 700™ Moving Map GPS. New features and user enhancements will include adding Terminal Area Charts to GPS Mode and multiple user interface features. The Version 4 Software Update is also available for existing users to download via a simple "Update Package" from the iFly 700™ User website. This update is included in the Standard \$69 Annual Data Update Subscription.



"The iFly 700™ Moving Map GPS was designed for private pilots based on the feedback from pilots. We even established a user wish-list for owners to make suggestions and post feedback," states Walter Boyd, President of Adventure Pilot. Also noting, "Each software update is our commitment to stay connected with our users and evolve the iFly 700™ in features and capabilities."

### Terminal Area Charts

The iFly 700™ GPS will now include geo-referenced Terminal Area Charts in GPS Mode to compliment the existing Sectional Charts and Low Enroute Charts. Pilots are able to follow their current GPS position visually on actual FAA Terminal Area Charts for heavily congested airspaces. "We believe this new feature offers a much higher level of situational awareness in complex airspaces and provides additional confidence and safety," comments Boyd. Terminal Area Charts updates are now included in the Standard (VFR) and Enhanced (VFR+IFR) Annual Data Subscription. Users can select from a list of charts to be updated based on their own demand. Additionally, Adventure Pilot emails current Data Subscribers a detailed list of when sectionals and charts are expiring and need updating.

### New Interface Features

Following the Version 4 Software update, the iFly 700 gains additional features including Track-Up, Magnetic/True North functionality, Importable GPX Flight Plans, Variable Fading Buttons and more. Pilots can now toggle between Track-Up or North-Up GPS tracking with the touch of a newly placed button on the map screen. This feature along with many others were based on the feedback of the user community. Boyd notes, "It's a bit of a shock, I've always been a track-up guy but we strive to give our users their desired features."

The iFly 700™ now gains the ability to import GPX files from 3rd party flight planning software via PC. New variable fading screen buttons can be customized to maximize screen real estate, giving users the option of no fade, half fade or full fading. Additional instruments stating the name of a Waypoint and Final Destination have been added to ensure proper targeting. Adventure Pilot has also added the ability to select between True North and Magnetic North on the iFly 700™. "The addition of Distance, Turn and ETE to the Nearby Airports is a great safety feature in the event of needing to land quickly," also noting "We are very excited to bring these enhancements in this Software Update to the user community and potential new owners," states Boyd.

About Adventure Pilot:

Adventure Pilot LLC designs, manufactures and markets affordable general aviation solutions to inspire, inform, and enable a community of passionate pilots to fulfill their desire for aerial adventures. The iFly 700™ portable touch screen GPS provides unmatched situational awareness at an outstanding value. In addition, Adventure Pilot also provides information on thousands of destinations and offers the aviation community online planning tools for flight. Life is in the journey, it is the destinations you choose that determine your path. For more information, please visit [www.iFlyGPS.com](http://www.iFlyGPS.com) or contact the Marketing Department at 888-200-5129, Ext 802. Adventure Pilot™ and iFly 700™ are registered trademarks of Adventure Pilot, LLC.

###

Contact: Adventure Pilot LLC  
1-888-200-5129, Ext. 802  
<http://www.iFlyGPS.com>